

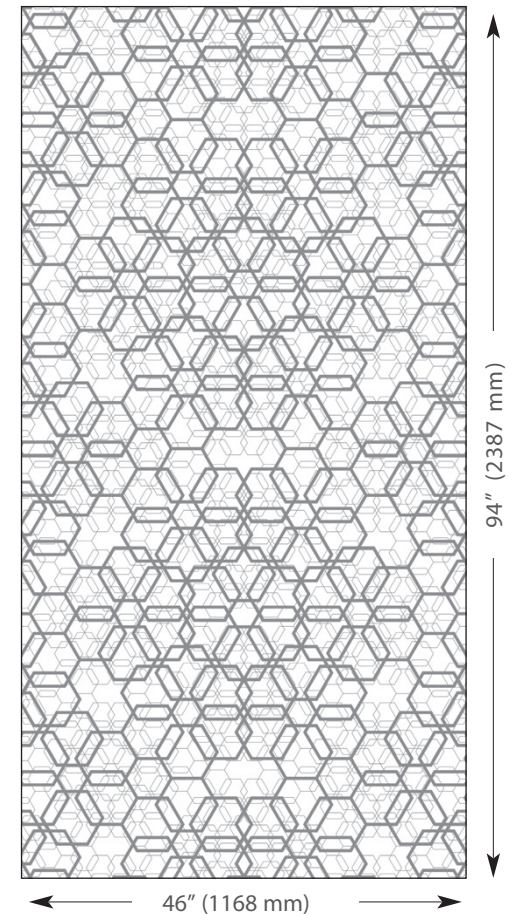
# Glassfile Textures

## Unity 1.0



Glassfile texture	<ul style="list-style-type: none"> <li>Unity Series 1.0</li> </ul>
Pattern	<ul style="list-style-type: none"> <li>Superimposition of repeating hexagonal pattern expressed through geometry and symmetry.</li> </ul>
Maximum panel size	<ul style="list-style-type: none"> <li>46" wide x 94" high (call for oversized panels)</li> </ul>
Thickness available	<ul style="list-style-type: none"> <li>1/4" (6 mm) 3.27 lb/sq.ft</li> <li>3/8" (10 mm) 4.90 lb/sq.ft</li> <li>1/2" (12 mm) 6.64 lb/sq.ft</li> <li>5/8" (15 mm) 8.17 lb/sq.ft</li> <li>3/4" (19 mm) 9.81 lb/sq.ft</li> </ul>
Natural color	<ul style="list-style-type: none"> <li>Clear float glass</li> <li>Low iron glass – special request (virtually eliminates the green cast inherent in standard clear float glass)</li> </ul>

Panel finish available	<ul style="list-style-type: none"> <li>All stock colors (transparent, frosted, opaque or sfumato)</li> <li>Custom colors (transparent, frosted, opaque or sfumato)</li> <li>Sandblast (10–100% frosted)</li> <li>Transition - note: maximum panel width: 46" (1168 mm)</li> </ul>
Safety treatment	<ul style="list-style-type: none"> <li>Temper</li> <li>Laminate</li> <li>Temper and laminate</li> </ul>
Design options	<ul style="list-style-type: none"> <li>Curve – Bend</li> <li>Shape – Cut</li> <li>Drill</li> <li>Notch</li> <li>Slump</li> <li>Carve</li> <li>Carve and clarify</li> </ul>
Edge finish available	<ul style="list-style-type: none"> <li>Kiln polish (unless other wise specified)</li> <li>Flat machine polish</li> <li>Arriss</li> </ul>



This diagram is a representation only. Please refer to our web site or contact JBGS for additional information. All drawings and materials appearing herein constitute original and unpublished work of Joel Berman Glass Studios and may not be duplicated without prior consent of JBGS.